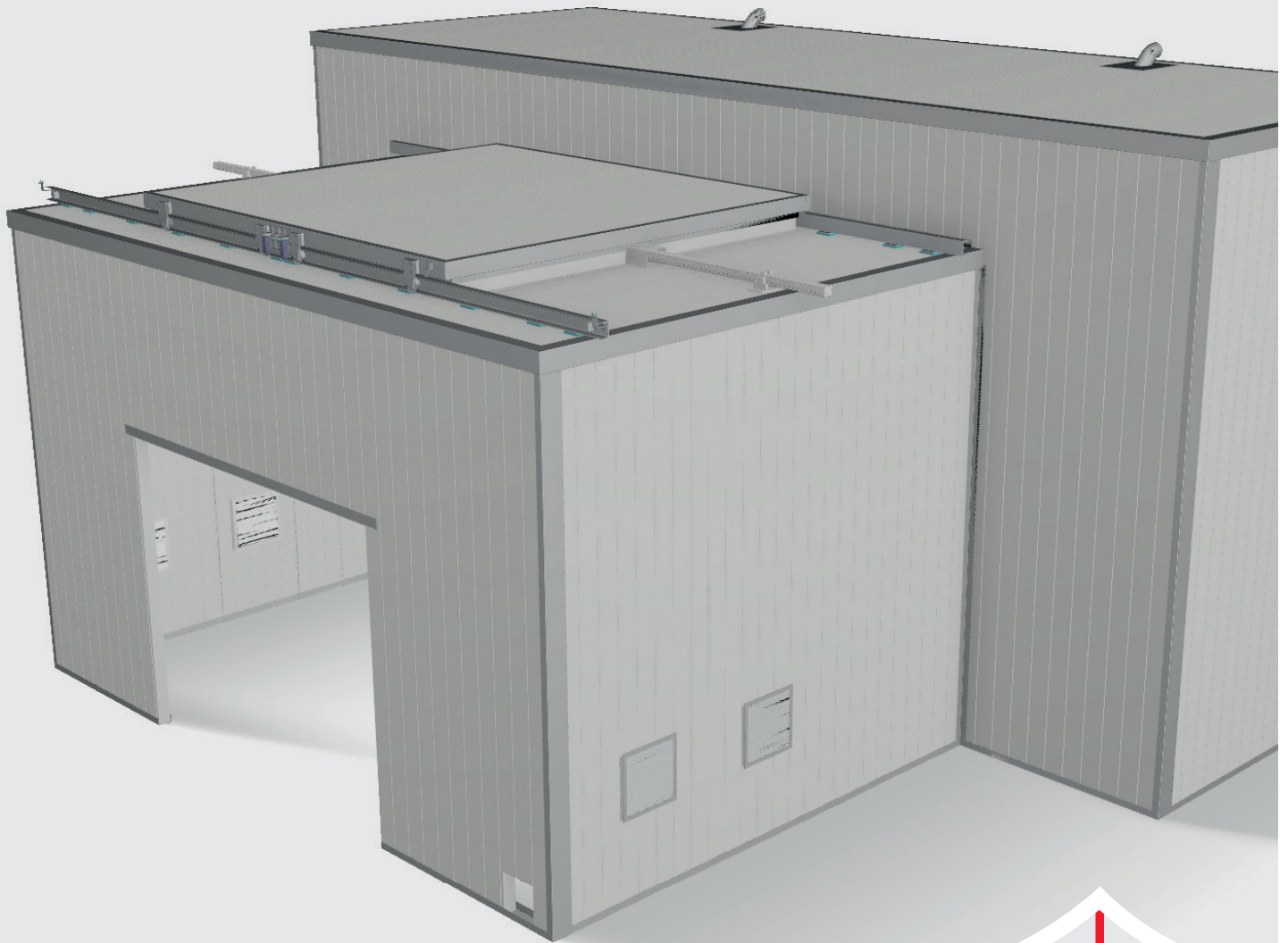


FEE



LASER PROTECTION BOOTHS



F.EE LASER PROTECTION BOOTHS – MAXIMUM SAFETY AND FLEXIBILITY

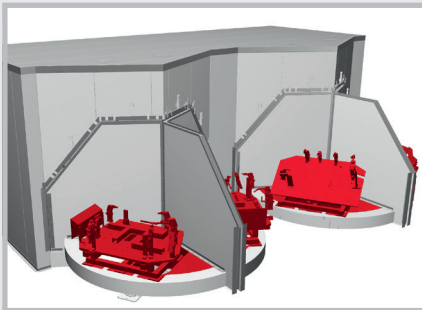


The self-supporting F.EE laser protection booths are based on a **modular system** which is able to assure **simple and fast construction** as well as the **implementation of your requirements and adaptation wishes**. The construction features **twin-walled steel girders** and guarantees a **substantially higher safety factor** than protective walls and booths made of aluminium.

As **passive laser protection booths**, F.EE booths are ideally suited for use with **laser power ratings of 0.5 up to 16 kW**. If so desired, integration of expensive, **active laser protection equipment** is possible. However, there is usually no need for this in conjunction with F.EE laser protection booths – due to their optimum wall structure and/or their superlative

wall reinforcement. The laser protection wall elements hold **certification to DIN EN 60825-4** and are suitable for **all laser types** up to **Class 4**.

If so desired, F.EE laser protection booths can be inspected, approved and certified by a publicly appointed and sworn **technical specialist** for laser technology.



The modular system on which F.EE laser protection booths are based provides maximum flexibility in terms of equipment:

DOORS/GATES:



Depending on your requirements, these laser protection booths can be equipped with **single/double doors, lifting gates, sliding gates** and/or **telescopic gates**.

APERTURES:



These booths can be integrated with **apertures of any kind** – for example for inlet/exhaust air, cable ducts or fibre-optic cables etc.

SEALS:



Also a **vast array of seal variants** – e. g. for turntables, mobile axes and the full range of different supply systems – can be fitted.

OPTIONAL ACCESSORIES:



If so desired, we can equip your laser protection booths with appropriate **lighting, booth monitoring, rail systems** for operational and/or maintenance purposes as well as **local inlet and exhaust air systems** for remote laser booths. It is also possible without any problem to adapt F.EE laser protection booths to meet these requirements.

YOUR CONTACT AT F.EE:

Andreas Killermann

phone: 09672 506-47709 | e-mail: Andreas.Killermann@fee.de



F.EE